

KHSAA Basketball - Game Box Score

Christian County Lady Colonels vs. East Carter Lady Raiders

Date: 03/26/2004 Time: 6:30 pm CST Site: Diddle Arena-Bowling Green, KY Attendance:

Visitors: East Carter Lady Raiders

##	Name	P	FG	3 Pt	FT	PTS	ORB	DRB	TR	PF	AST	TO	BS	ST	MIN
4	* Ashley Baldwin		6/7	0/1	3/4	15	0	3	3	2	2	5	0	0	30:04
10	Heather Phillips		0/0	0/0	0/0	0	0	0	0	0	1	0	0	0	0:21
14	* Molly Jackson		0/4	0/4	0/0	0	1	3	4	4	4	6	0	1	25:54
21	* Brooke McDavid		1/3	0/0	2/4	4	0	1	1	1	1	1	0	0	19:59
22	Tawnee Tackett		0/0	0/2	0/1	0	0	0	0	0	1	0	0	0	6:31
31	* Kim Stapleton		3/6	1/4	0/0	9	3	9	12	1	2	7	0	2	30:50
32	Kyra Baier		0/0	0/0	0/0	0	0	0	0	0	0	0	0	0	0:21
33	Krista Kouns		3/6	0/0	0/0	6	3	0	3	1	0	1	0	0	13:59
35	Alicia Myers		0/0	0/0	0/0	0	0	0	0	0	0	0	0	0	1:10
41	Kelli Suttles		0/0	0/0	0/0	0	0	1	1	0	0	0	0	1	1:10
42	Hope Jones		1/1	0/0	0/0	2	0	0	0	0	0	0	0	0	0:49
44	Megan Flaughter		0/0	0/0	0/0	0	0	0	0	0	0	0	0	0	0:49
55	* Amanda Prichard		2/6	1/1	1/2	8	1	3	4	3	2	3	0	0	27:42
11	Brianna Buck		1/1	0/0	0/0	2	0	0	0	0	0	0	0	0	0:21
	Team						2	0	2						
	Totals		17/34	2/12	6/11	46	10	20	30	12	13	23	0	4	160
	2 PT FG		1st Half	7/12	58.3%	2nd Half	10/22	45.5%	Game	17/34	50.0%				
	3 PT FG		1st Half	2/8	25.0%	2nd Half	0/4	0.00%	Game	2/12	16.7%				
	Free Throws		1st Half	2/4	50.0%	2nd Half	4/7	57.1%	Game	6/11	54.5%				

Home: Christian County Lady Colonels

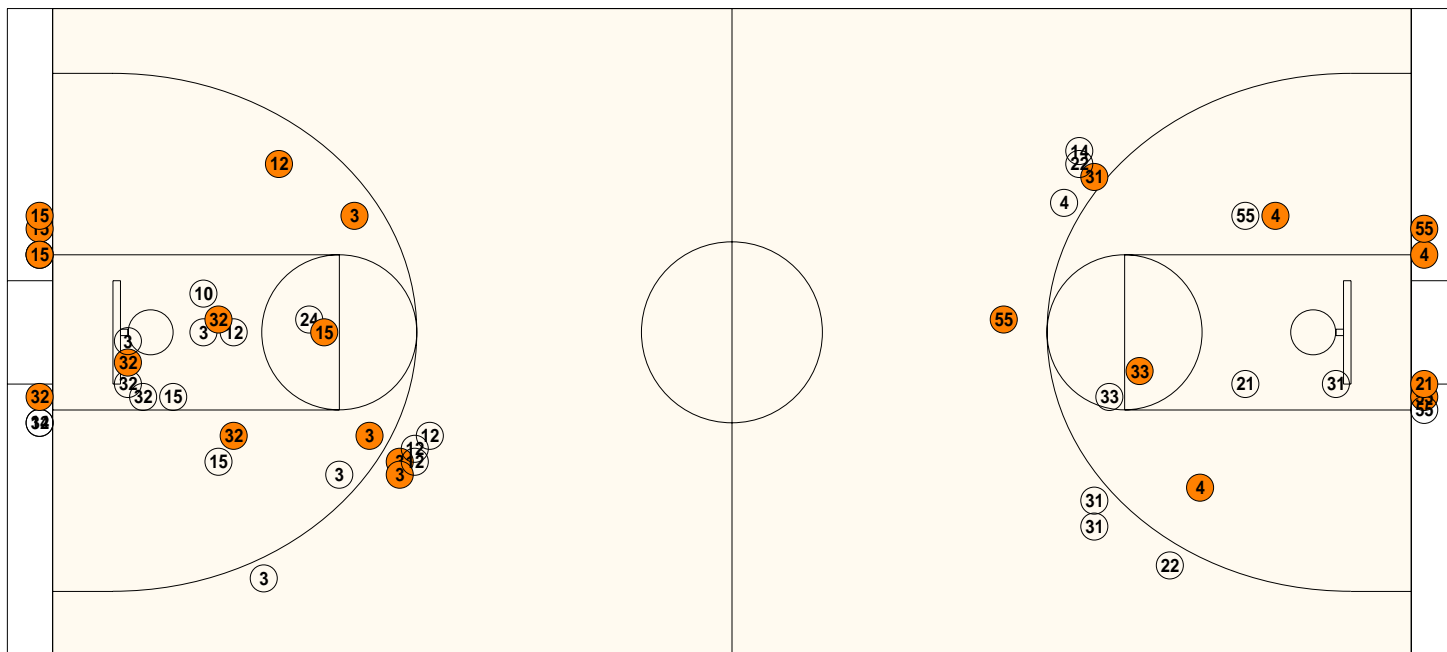
##	Name	P	FG	3 Pt	FT	PTS	ORB	DRB	TR	PF	AST	TO	BS	ST	MIN
3	* Lydia Watkins		2/5	2/3	1/2	11	1	3	4	3	1	2	0	2	17:22
10	Shanna McCombs		0/1	0/0	0/0	0	0	1	1	1	0	2	0	1	14:10
12	* Corkey Stiger		6/11	1/6	2/3	17	3	2	5	1	2	0	0	1	26:04
15	* Shaleea Petty		4/6	0/0	2/2	10	0	2	2	1	7	1	1	4	26:24
24	* Rita Sanchez		2/4	0/0	0/0	4	0	1	1	1	0	0	1	1	12:09
25	Annisia Wilson		0/0	0/0	2/2	2	1	0	1	0	0	1	0	0	3:39
30	Tracey Howard		0/0	0/0	0/0	0	0	1	1	0	0	0	0	0	3:39
31	Denisha Mumford		0/2	0/0	0/0	0	0	0	0	0	0	0	0	0	1:45
32	* Arnika Brown		6/10	0/0	1/4	13	4	6	10	1	3	3	1	6	25:25
34	Ashley Briggs		0/2	0/0	0/0	0	0	0	0	0	0	0	0	1	6:45
45	Shermania Riley		1/1	0/0	0/0	2	0	0	0	0	0	0	0	0	4:21
50	Renea Maxie		1/2	0/0	0/0	2	0	1	1	2	0	0	0	0	3:39
55	Jana Betts		0/1	0/0	2/4	2	3	1	4	0	0	0	0	0	9:05
21	Shetera Lewis		1/1	0/0	0/0	2	0	0	0	0	0	0	0	0	1:54
20	Kelly Wangrycht		0/1	0/0	0/0	0	0	1	1	1	1	2	0	0	3:39
	Team						0	1	1						
	Totals		23/47	3/9	10/17	65	12	20	32	11	14	11	3	16	160
	2 PT FG		1st Half	13/25	52.0%	2nd Half	10/22	45.5%	Game	23/47	48.9%				
	3 PT FG		1st Half	2/6	33.3%	2nd Half	1/3	33.3%	Game	3/9	33.3%				
	Free Throws		1st Half	2/4	50.0%	2nd Half	8/13	61.5%	Game	10/17	58.8%				

	ECAR	CHRI		ECAR	CHRI		ECAR	CHRI
Free Throw Pts	6	10	3Pt Points	6	9	Pts/Possession	0.72	1.03
Pts off Turnovers	11	23	2nd Chance Points	7	11	Pts off Bench	10	10
Total Rebounds	30	32	Team Rebounds	2	1	Dead Ball Reb	3	4
Off Rebound %	33.3	37.5	Def Rebound %	62.5	66.7	Total Rebound %	48.4	51.6
3Pt Efficiency	-16.7	+0.7	Def. Stops	31	43	Pts/Shot	0.90	1.02
Technical Fouls	ECAR	None						
	CHRI	None						
Officials	Doug Coulter, Jack Whittemore, Trent Lovett							

	Qtr 1	Qtr 2	Qtr 3	Qtr 4	OT 1	OT 2	OT 3	OT 4	Total
East Carter Lady Raiders	10	12	6	18	0	0	0	0	46
Christian County Lady Colonels	17	17	12	19	0	0	0	0	65

Largest Lead CHRI 58 ECAR 30 (28 pts) **Lead Changes** 0 **Number of Ties** 1
Comments: None

FIRST HALF



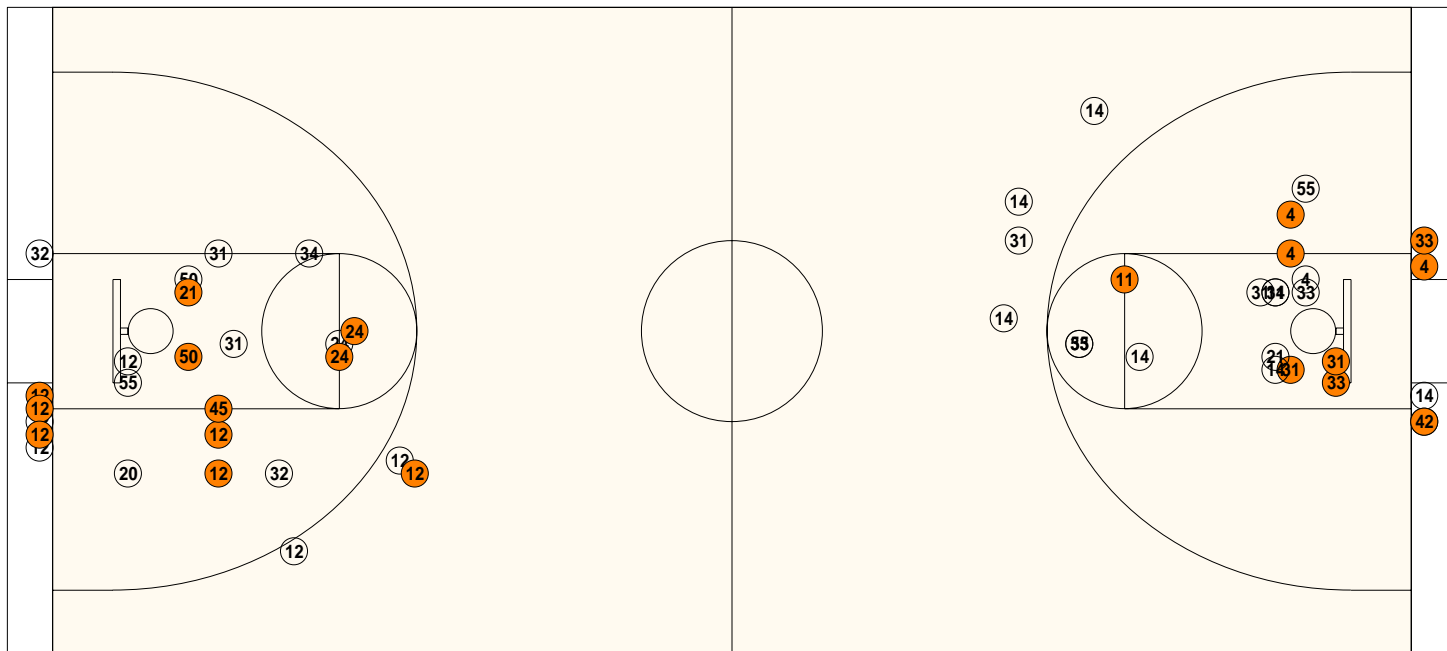
Christian County

Shooting	Pts	Pts
2FG 13/25 (52.0%)	26	Pts/Shot 1.03
3FG 2/6 (33.3%)	6	2nd Eff Pts 6
TFG 15/31 (48.4%)		Pts off TO's 13
FT 2/4 (50.0%)	2	3Pt Eff -1.3
Scoring Distribution: 2FG 76.5% 3FG 17.6% FT 5.9%		

East Carter

Shooting	Pts	Pts
2FG 7/12 (58.3%)	14	Pts/Shot 1.00
3FG 2/8 (25.0%)	6	2nd Eff Pts 0
TFG 9/20 (45.0%)		Pts off TO's 2
FT 2/4 (50.0%)	2	3Pt Eff -13.9
Scoring Distribution: 2FG 63.6% 3FG 27.3% FT 9.1%		

SECOND HALF



Christian County

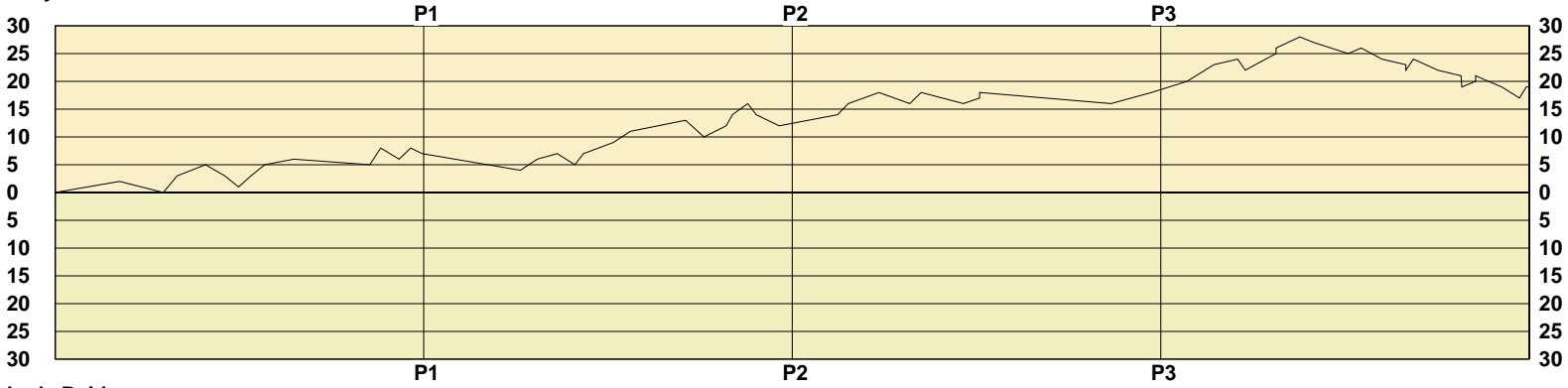
Shooting	Pts	Pts
2FG 10/22 (45.5%)	20	Pts/Shot 1.00
3FG 1/3 (33.3%)	3	2nd Eff Pts 5
TFG 11/25 (44.0%)		Pts off TO's 10
FT 8/13 (61.5%)	8	3Pt Eff +3.0
Scoring Distribution: 2FG 64.5% 3FG 9.7% FT 25.8%		

East Carter

Shooting	Pts	Pts
2FG 10/22 (45.5%)	20	Pts/Shot 0.83
3FG 0/4 (0.00%)	0	2nd Eff Pts 7
TFG 10/26 (38.5%)		Pts off TO's 9
FT 4/7 (57.1%)	4	3Pt Eff -30.3
Scoring Distribution: 2FG 83.3% 3FG 0.0% FT 16.7%		

Lady Colonels

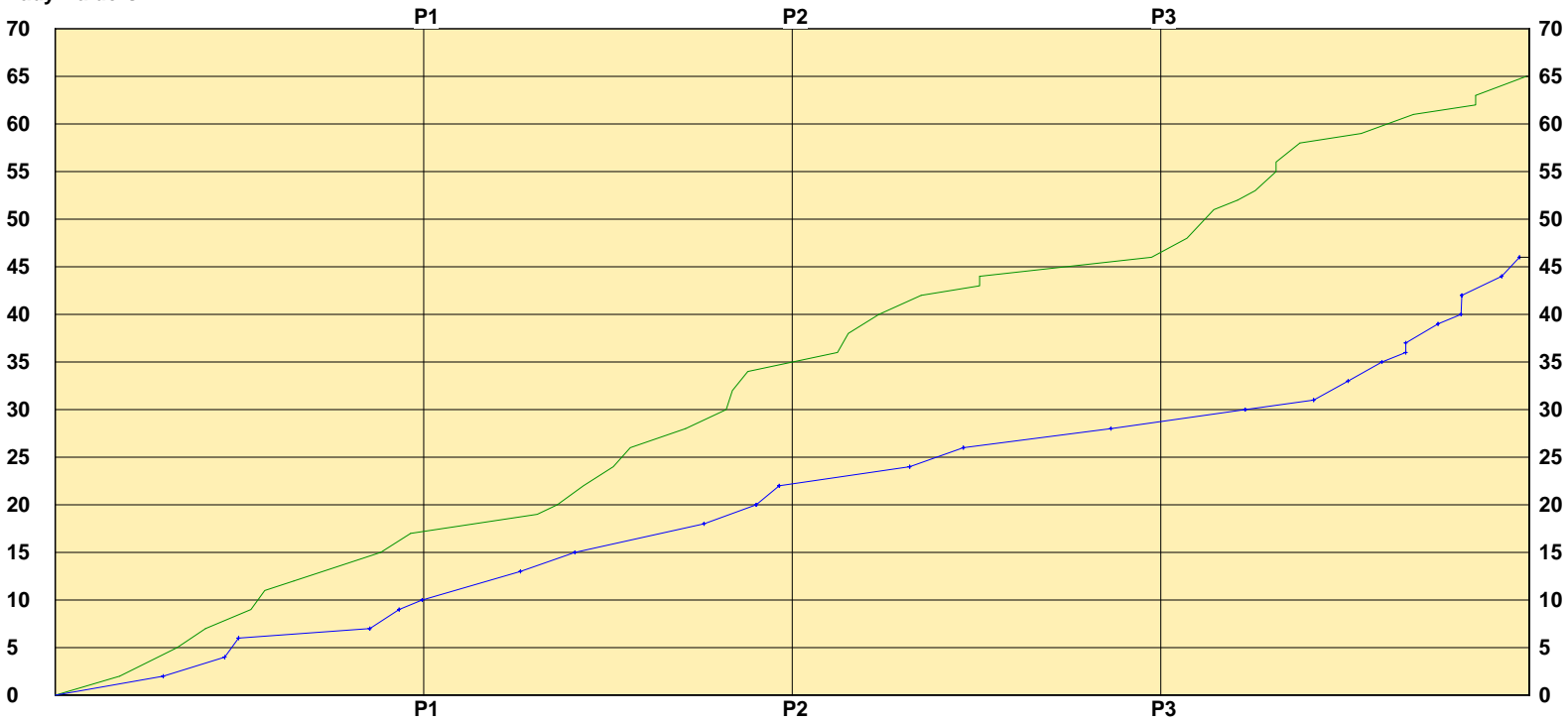
LEAD TIMELINE



Lady Raiders

Lady Colonels
 Lady Raiders

SCORING TIMELINE



Largest Lead CHRI 58 ECAR 30 (28 pts) Lead Changes 0 Number of Ties 1

KHSAA Basketball - Play by Play Report - Scoring Only (pg 1)

Christian County Lady Colonels vs. East Carter Lady Raiders

Date: 03/26/2004 Time: 6:30 pm CST Site: Diddle Arena-Bowling Green, KY Attendance:

Name	Action	Action	Score	Clock	Diff	Name	Action	Action
L Watkins	FG Made	S Petty Assist	2-0	1 6:36	+2 (L1)			
			2-2	1 5:39	(T1)	A Prichard	Layup Made	K Stapleton Assist
L Watkins	3Pt Made		5-2	1 5:21	+3			
A Brown	Putback Made		7-2	1 4:44	+5			
			7-4	1 4:19	+3	A Baldwin	FG Made	A Prichard Assist
			7-6	1 4:01	+1	A Baldwin	FG Made	
A Brown	FG Made		9-6	1 3:45	+3			
A Brown	Layup Made	L Watkins Assist	11-6	1 3:27	+5			
A Brown	FT Made		12-6	1 2:49	+6			
			12-7	1 1:10	+5	B McDavid	FT Made	
L Watkins	3Pt Made		15-7	1 0:56	+8			
			15-9	1 0:32	+6	K Kouns	FG Made	
L Watkins	FG Made		17-9	1 0:17	+8			
			17-10	1 0:02	+7	A Baldwin	FT Made	

End of Period Summary Lady Colonels 17 Lady Raiders 10

Largest Lead: Lady Colonels 15 Lady Raiders 7 (8 pts)

Lead Changes: 1 Ties: 1

Lead in Period: Lady Colonels 15 Lady Raiders 7 (8 pts)

Lead Changes: 0 Ties: 1 (this period)

1 for 2 oppo pts

Turnovers

6 for 3 oppo pts

3 for 4 pts

2nd Chances

2 for 0 pts

7/15 for 46.7 %

Field Goals

4/10 for 40.0 %

1/2 for 50.0 %

Free Throws

2/4 for 50.0 %

			17-13	2 5:54	+4	K Stapleton	3Pt Made	A Baldwin Assist
S Petty	FG Made		19-13	2 5:32	+6			
L Watkins	FT Made		20-13	2 5:06	+7			
			20-15	2 4:43	+5	A Baldwin	Layup Made	M Jackson Assist
A Brown	FG Made	S Petty Assist	22-15	2 4:32	+7			
C Stiger	FG Made	S Petty Assist	24-15	2 3:53	+9			
A Brown	Layup Made		26-15	2 3:31	+11			
A Brown	Layup Made	C Stiger Assist	28-15	2 2:19	+13			
			28-18	2 1:55	+10	A Prichard	3Pt Made	A Baldwin Assist
S Petty	Layup Made		30-18	2 1:26	+12			
S Petty	Layup Made		32-18	2 1:18	+14			
S Petty	Layup Made		34-18	2 0:58	+16			
			34-20	2 0:47	+14	A Prichard	Layup Made	B McDavid Assist
			34-22	2 0:17	+12	B McDavid	Layup Made	K Stapleton Assist

End of Period Summary Lady Colonels 34 Lady Raiders 22

Largest Lead: Lady Colonels 34 Lady Raiders 18 (16 pts)

Lead Changes: 1 Ties: 1

Lead in Period: Lady Colonels 34 Lady Raiders 18 (16 pts)

Lead Changes: 0 Ties: 0 (this period)

2 for 0 oppo pts

Turnovers

9 for 10 oppo pts

3 for 2 pts

2nd Chances

2 for 0 pts

8/16 for 50.0 %

Field Goals

5/10 for 50.0 %

1/2 for 50.0 %

Free Throws

0/0 for 0.00 %

R Sanchez	FG Made		36-22	3 7:01	+14			
C Stiger	Layup Made	A Brown Assist	38-22	3 6:47	+16			
C Stiger	FG Made	A Brown Assist	40-22	3 6:07	+18			
			40-24	3 5:27	+16	A Baldwin	Layup Made	M Jackson Assist
R Sanchez	FG Made	C Stiger Assist	42-24	3 5:12	+18			

KHSAA Basketball - Play by Play Report - Scoring Only (pg 2)

Christian County Lady Colonels vs. East Carter Lady Raiders

Date: 03/26/2004 Time: 6:30 pm CST Site: Diddle Arena-Bowling Green, KY Attendance:

Name	Action	Action	Score	Clock	Diff	Name	Action	Action	
S Petty	FT Made		42-26	3	4:17	+16	K Stapleton	FG Made	M Jackson Assist
S Petty	FT Made		43-26	3	3:56	+17			
S Petty	FT Made		44-26	3	3:56	+18			
C Stiger	Layup Made	A Brown Assist	44-28	3	1:05	+16	K Stapleton	Layup Made	A Prichard Assist
C Stiger			46-28	3	0:12	+18			

End of Period Summary Lady Colonels 46 Lady Raiders 28

Largest Lead: Lady Colonels 40 Lady Raiders 22 (18 pts)

Lead in Period: Lady Colonels 40 Lady Raiders 22 (18 pts)

Lead Changes: 1 Ties: 1

Lead Changes: 0 Ties: 0 (this period)

4 for 2 oppo pts
2 for 2 pts
5/10 for 50.0 %
2/4 for 50.0 %

Turnovers
2nd Chances
Field Goals
Free Throws

6 for 6 oppo pts
3 for 2 pts
3/11 for 27.3 %
0/0 for 0.00 %

S Riley	FG Made	S Petty Assist	48-28	4	7:26	+20			
C Stiger	3Pt Made	S Petty Assist	51-28	4	6:51	+23			
C Stiger	FT Made		52-28	4	6:20	+24			
			52-30	4	6:10	+22	A Baldwin	FG Made	
J Betts	FT Made		53-30	4	5:57	+23	A Prichard	Personal Foul	
C Stiger	Layup Made	S Petty Assist	55-30	4	5:30	+25			
C Stiger	FT Made		56-30	4	5:30	+26	K Kouns	Personal Foul	
C Stiger	FG Made	S Petty Assist	58-30	4	4:59	+28			
S Petty	Personal Foul		58-31	4	4:41	+27	A Prichard	FT Made	
			58-33	4	3:56	+25	K Kouns	Layup Made	M Jackson Assist
J Betts	FT Made		59-33	4	3:39	+26			
			59-35	4	3:12	+24	K Kouns	Putback Made	
R Maxie	Personal Foul		59-36	4	2:41	+23	A Baldwin	FT Made	
			59-37	4	2:41	+22	A Baldwin	FT Made	
R Maxie	FG Made	K Wangrycht Assist	61-37	4	2:31	+24			
			61-39	4	1:59	+22	A Baldwin	FG Made	
R Maxie	Personal Foul		61-40	4	1:29	+21	B McDavid	FT Made	
			61-42	4	1:28	+19	K Stapleton	Putback Made	
A Wilson	FT Made		62-42	4	1:10	+20			
A Wilson	FT Made		63-42	4	1:10	+21			
			63-44	4	0:36	+19	H Jones	Layup Made	T Tackett Assist
			63-46	4	0:13	+17	B Buck	FG Made	H Phillips Assist
S Lewis	FG Made		65-46	4	0:04	+19			

End of Period Summary Lady Colonels 65 Lady Raiders 46

Largest Lead: Lady Colonels 58 Lady Raiders 30 (28 pts)

Lead in Period: Lady Colonels 58 Lady Raiders 30 (28 pts)

Lead Changes: 1 Ties: 1

Lead Changes: 0 Ties: 0 (this period)

4 for 7 oppo pts
4 for 3 pts
6/15 for 40.0 %
6/9 for 66.7 %

Turnovers
2nd Chances
Field Goals
Free Throws

2 for 4 oppo pts
3 for 5 pts
7/15 for 46.7 %
4/7 for 57.1 %

OFFICIAL BASKETBALL BOX SCORE

East Carter Lady Raiders vs Christian County Lady Colonels

03/26/2004 6:30 pm CST

Final Box Score

Diddle Arena
Bowling Green, KY

No.	East Carter Lady Raiders	Total FG		3-point		Free throw		Rebounds			F	TP	A	TO	BLK	STL	MIN
		FG	FGA	FG	FGA	FT	FTA	Off	Def	Tot							
4	Ashley Baldwin	6	8	0	1	3	4	0	3	3	2	15	2	5	0	0	30:04
10	Heather Phillips	0	0	0	0	0	0	0	0	0	0	0	1	0	0	0	0:21
14	Molly Jackson	0	8	0	4	0	0	1	3	4	4	0	4	6	0	1	25:54
21	Brooke McDavid	1	3	0	0	2	4	0	1	1	1	4	1	1	0	0	19:59
22	Tawnee Tackett	0	2	0	2	0	1	0	0	0	0	0	1	0	0	0	6:31
31	Kim Stapleton	4	10	1	4	0	0	3	9	12	1	9	2	7	0	2	30:50
55	Amanda Prichard	3	7	1	1	1	2	1	3	4	3	8	2	3	0	0	27:42
33	Krista Kouns	3	6	0	0	0	0	3	0	3	1	6	0	1	0	0	13:59
35	Alicia Myers	0	0	0	0	0	0	0	0	0	0	0	0	0	0	0	1:10
41	Kelli Suttles	0	0	0	0	0	0	0	1	1	0	0	0	0	0	1	1:10
42	Hope Jones	1	1	0	0	0	0	0	0	0	0	2	0	0	0	0	0:49
44	Megan Flaughter	0	0	0	0	0	0	0	0	0	0	0	0	0	0	0	0:49
32	Kyra Baier	0	0	0	0	0	0	0	0	0	0	0	0	0	0	0	0:21
11	Brianna Buck	1	1	0	0	0	0	0	0	0	0	2	0	0	0	0	0:21
Team (Included in Totals)								2	0	2							0
Totals		19	46	2	12	6	11	10	20	30	12	46	13	23	0	4	160

Total FG%: 1st half 9 - 20 (45.0%) 2nd half 10 - 26 (38.5%) Game 19 - 46 (41.3%)
 3Pt FG%: 1st half 2 - 8 (25.0%) 2nd half 0 - 4 (0.00%) Game 2 - 12 (16.7%)
 FT%: 1st half 2 - 4 (50.0%) 2nd half 4 - 7 (57.1%) Game 6 - 11 (54.5%)

Deadball
rebound 3

No.	Christian County Lady Colonels	Total FG		3-point		Free throw		Rebounds			F	TP	A	TO	BLK	STL	MIN
		FG	FGA	FG	FGA	FT	FTA	Off	Def	Tot							
3	Lydia Watkins	4	8	2	3	1	2	1	3	4	3	11	1	2	0	2	17:22
10	Shanna McCombs	0	1	0	0	0	0	0	1	1	1	0	0	2	0	1	14:10
12	Corkey Stiger	7	17	1	6	2	3	3	2	5	1	17	2	0	0	1	26:04
15	Shaleea Petty	4	6	0	0	2	2	0	2	2	1	10	7	1	1	4	26:24
24	Rita Sanchez	2	4	0	0	0	0	0	1	1	1	4	0	0	1	1	12:09
32	Arnika Brown	6	10	0	0	1	4	4	6	10	1	13	3	3	1	6	25:25
55	Jana Betts	0	1	0	0	2	4	3	1	4	0	2	0	0	0	0	9:05
34	Ashley Briggs	0	2	0	0	0	0	0	0	0	0	0	0	0	0	1	6:45
45	Shermania Riley	1	1	0	0	0	0	0	0	0	0	2	0	0	0	0	4:21
25	Annisia Wilson	0	0	0	0	2	2	1	0	1	0	2	0	1	0	0	3:39
30	Tracey Howard	0	0	0	0	0	0	0	1	1	0	0	0	0	0	0	3:39
50	Renea Maxie	1	2	0	0	0	0	0	1	1	2	2	0	0	0	0	3:39
20	Kelly Wangrycht	0	1	0	0	0	0	0	1	1	1	0	1	2	0	0	3:39
21	Shetera Lewis	1	1	0	0	0	0	0	0	0	0	2	0	0	0	0	1:54
31	Denisha Mumford	0	2	0	0	0	0	0	0	0	0	0	0	0	0	0	1:45
Team (Included in Totals)								0	1	1							0
Totals		26	56	3	9	10	17	12	20	32	11	65	14	11	3	16	160

Total FG%: 1st half 15 - 31 (48.4%) 2nd half 11 - 25 (44.0%) Game 26 - 56 (46.4%)
 3Pt FG%: 1st half 2 - 6 (33.3%) 2nd half 1 - 3 (33.3%) Game 3 - 9 (33.3%)
 FT%: 1st half 2 - 4 (50.0%) 2nd half 8 - 13 (61.5%) Game 10 - 17 (58.8%)

Deadball
rebound 4

Technical Fouls: None

Attendance:

Officials: Doug Coulter, Jack Whittemore, Trent Lovett

Score by Period	1st	2nd	3rd	4th	Final	Record	Overall	Conf
East Carter Lady Raiders	10	12	6	18	46	Lady Raiders		
Christian County Lady Colonels	17	17	12	19	65	Lady Colonels		

Points off Turnovers	23	11	Second Effort Points	11	7	Bench Points	10	10
Points in the Paint	28	24	3 Point Points	9	6	Free Throw Points	10	6
3pt Efficiency	+0.7	-16.7	Points/Shot	1.02	0.90	Defensive Stops	43	31
Largest Lead	58	30	Lead Changes	0		Number of Ties	1	

Game comments: None